

HC-36-150fps PCIe CameraLink Framegrabber and Camera

150 frames per second

June, 14 2012

HaSoTec Real-Time Imaging



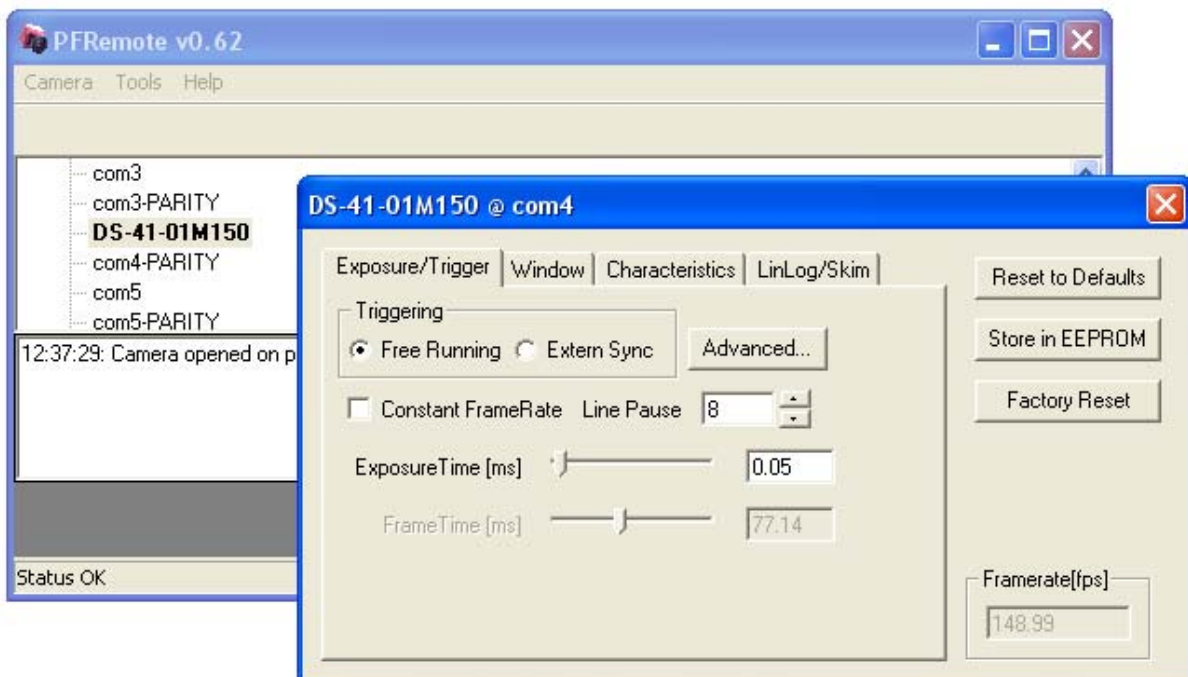
HaSoTec GmbH Burgwall 20 18055 Rostock
<http://www.hasotec.com> +49 381 4909834 info@hasotec.com

Software

HC-36-150fps has signed drivers for 32-bit and 64-bit Microsoft Windows. The HaSoTec Real-Time API 9709 adds low latency and ring buffer support. The supplied video application HC36VIEW allows to capture full resolution film sequences with up to 150 fps. A Camera Setup-Window allows to adjust the frame rate. Lower frame rates can typically used to have longer illumination times to reduce noise.

The Software basically has two operation modes. The first mode is memory based and uses nearly all of available RAM to collect frames into a ring buffer. A trigger signal or key can be used to stop collecting frames after a defined number of frames. The whole sequence can be watched in different speeds and on a frame by frame basis.

The second mode records longer sequences to disk. High speed disks and Raid arrays are recommended, however, the frame rate of the camera can be exactly adjusted to fit to the disks transfer rate.



The software for camera adjustments is a manufacturer supplied tool. It communicates with the help of a virtual RS-232 over CameraLink interface.

Digital Input

HC-36 has a CameraLink base interface. A 1,8m cable with MDR-26 Connector is supplied to connect the 150 fps camera.

Framegrabber Hardware

HC-36 is a PCI express x1 Interface for CameraLink base interface. It doubles the transfer rate if compared to conventional PCI solutions, such as HaSoTec HC-35. HC-36 has offers a CameraLink Chipset that is able to work at high clock speeds. This camera uses 80MHz Pixel Clock to transfer Image data over 2 taps to get streams with 160 Mbyte/s.

